

Contacts

Please contact either your General Practitioner (GP); the Mater Adult Hospital Procedure Unit on **07 3163 8496**; or the Mater Adult Hospital Emergency Department on telephone **07 3163 8111**, IMMEDIATELY if you experience any of the following after discharge: severe pain; abdominal distension; fever; vomiting; swelling at the site and bleeding at the site.

Mater Adult Hospital

Mater Adult Hospital is one of Brisbane's leading health facilities for non-insured patients. It is built on a foundation of clinical excellence and a commitment to safe, compassionate care, that is:

- quality focussed
- technologically advanced
- customised to patients' needs and lifestyles.

Mater Adult Hospital provides a wide range of surgical, medical and cancer services to non-insured patients. It features a 24-hour emergency department, intensive and coronary care units, day surgery, day oncology, day respite and busy medical, cancer and surgical units.

The hospital's Division of Medicine offers specialist services in respiratory medicine, endocrinology, gastroenterology, nephrology, cardiology, infectious diseases, dermatology, rheumatology, general surgery and medicine.

Modern facilities accommodate inpatients, outpatients, and day-only patients. General surgery is complemented by recognised surgical expertise in women's health, orthopaedics, urology, ophthalmology, vascular surgery, oral/faciomaxillary surgery, colorectal surgery, plastic surgery, ear/nose and throat surgery and dermatology.

While in hospital, patients also have access to a range of allied health practitioners (dietitians, physiotherapists, etc.), pharmacy, hairdressing, and chaplaincy services.

For more information about Mater Adult Hospital please telephone **07 3163 8111**.

For your information

Date of Procedure:

Time of Arrival:

Nil Orally from:

It is important to note that your arrival time is NOT your procedure time. Your arrival time allows time for admission and appropriate preparation prior to your procedure. Once admitted, your nurse can give you an approximate time of your procedure. Please also be aware that there can be waiting times due to emergencies and unforeseen delays.

Mater Adult Hospital
Raymond Terrace, South Brisbane Qld 4101

Telephone: **07 3163 8111**

Acknowledgments

Staff at Mater Adult Hospital, Raymond Terrace, South Brisbane, Qld 4101

© 2009 Mater Misericordiae Health Services
Brisbane Limited. ACN 096 708 922.

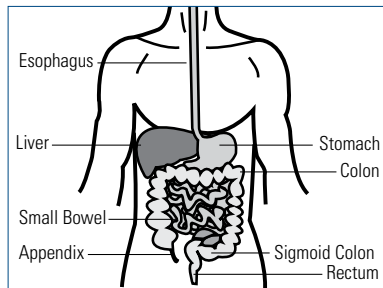


Liver Biopsy Patient Information

Exceptional People. Exceptional Care.

What is a liver biopsy?

In a liver biopsy the doctor examines a small piece of tissue from your liver for signs of damage or disease. A special needle is used to remove the tissue from the liver. The doctor decides to do a liver biopsy after tests suggest that the liver does not work properly. An X-ray could suggest that the liver is swollen. Looking at liver tissue itself is the best way to determine whether the liver is healthy or what is causing it to be damaged.



A needle is put into the liver through the abdominal or chest wall. A piece of liver tissue is removed through the needle and sent to pathology for testing. More than one piece of liver tissue may be required.

The procedure is usually done using local anaesthetic to numb the area. You may be given some medication to help you relax.

Prior to your procedure (please tick box on completion)

Please confirm your booking five days prior to procedure.

Phone: **07 3163 8183** (Monday to Friday between 8.30 am and 4 pm).

Date of procedure:

Discuss the following with your doctor:

- whether you should adjust any of your usual **medications** before the procedure (eg aspirin, anti-coagulant medications, diabetic medication and anti-inflammatory medications). **You will require a blood test prior to your procedure to ensure your blood clotting times are normal.**
- any drug **allergies** you may have
- if you have any **major diseases** such as a heart or lung condition, diabetes or epilepsy etc that may require special attention during the procedure.

Arrange for someone to take you home after the procedure. Please bring their contact details to hospital with you (we do not have waiting areas for friends and relatives in the unit).

It is important that you **fast** (have nothing to eat or drink) six hours prior to your arrival time.

On the day of your procedure please bring your:

- Medicare Card
- **completed registration** form
- medications that you may need to take after your procedure (e.g aspirin, iron, diabetic medications, anti-inflammatory medications).

Please **do not bring** any valuables or wear any jewellery when you come to hospital.

On arrival to Mater Adult Hospital please **report** to the admissions desk on Level 5, Day Procedure Unit.

What to expect during your liver biopsy?

Liver biopsy is considered minor surgery, and therefore is done in a hospital. For the biopsy, you will lie on a hospital bed on your back with your right hand above your head. After marking the outline of your liver and injecting a local anaesthetic to

numb the area, the physician will make a small incision in your right side near your rib cage, then insert the biopsy needle and retrieve a sample of liver tissue. In some cases, the doctor may use an ultrasound image of the liver to help guide the needle to a specific spot. It is important to lie very still during the procedure. The doctor will ask you to hold your breath for 5 to 10 seconds while he or she inserts the needle. You may feel pressure and a dull pain. The entire procedure takes about 20 minutes.

After your procedure

The nurse will monitor your vital signs and level of pain. You will be monitored for a minimum of six hours after your procedure, while lying in bed.

You may feel pain in your right shoulder which is referred pain. This pain is caused by irritation of the diaphragm muscle and should disappear within a few hours or days. If the pain is persistent your condition will be assessed and pain relief will be provided.

Post procedure information

1. **Please stay** in the company of a responsible adult within the Brisbane region for 24 hours.
2. **Do not** drive or operate any heavy machinery.
3. **Do not** consume alcohol for the remainder for the day.
4. **Do not** drive a car, motorcycle or ride a bicycle.
5. **Do not** sign any legal documents or make any important decisions.
6. **Do not** engage in sports or heavy lifting for 48 hours.
7. **Keep dressing on for 48 hours, then remove.**